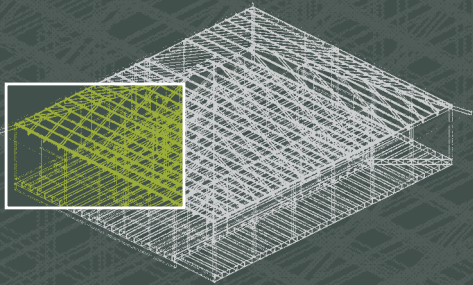


e-house®

Version 2.1





Version 2.1

Getting Started Guide

Welcome to e-house, the software that will enable you to determine the most appropriate Wesbeam LVL product to use within a framing environment for a given span and load.

Please use the user guide to provide you with easy step by step instructions on how to use e-house.

If you have any problems with the software please email e-house@wesbeam.com, and one of our technical support personnel will be able to assist.

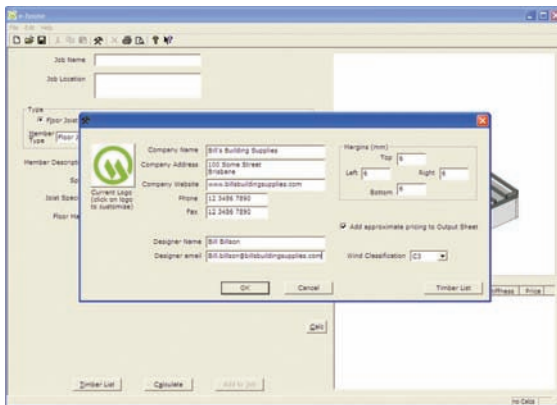


Step 1

1. Click on the desktop icon () to open the e-house software.
2. Click on the top left hand button titled e-house to start the software.

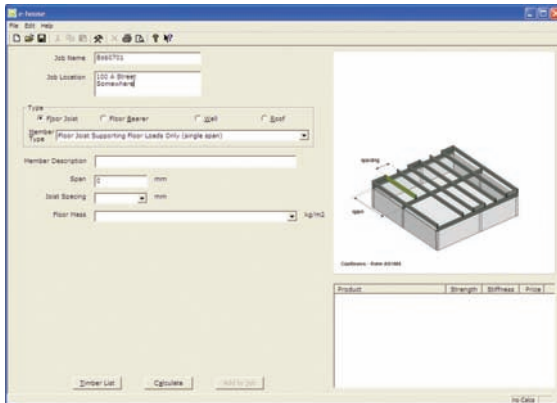
Notes:

- > The update software: internet button connects to the internet and automatically downloads the latest upgrade of the Wesbeam e-house software to ensure that your software is up to date.
- > The update software: CD button works in conjunction with a Wesbeam update CD. Place the upgrade CD in your CD drive and click on the update software: CD button to upgrade your software. If no CD is present a dialogue box opens allowing the user to point to a network location to allow upgrade over a local network.



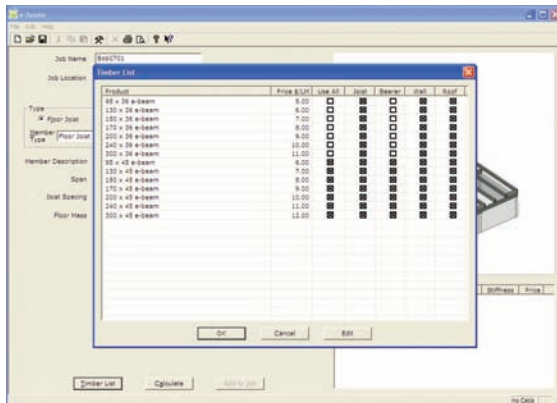
Step 2

3. On first use the preset screen will automatically open. On subsequent use the presets can be accessed by the presets button () or select edit > presets.
4. Enter company details and designer name. The company logo can be entered by clicking on the current logo. Any square logo can be selected as the company logo and is automatically displayed on the output sheet.
5. Enter margins (mm) for your output page.
6. Select to add approximate pricing to output sheet. This option uses the prices set up in the timber list to include the approximate price of the material for the project on the output sheet.
7. Wind Classification – select the nominated wind speed for the project that is being designed.
8. Timber list (refer step 16).



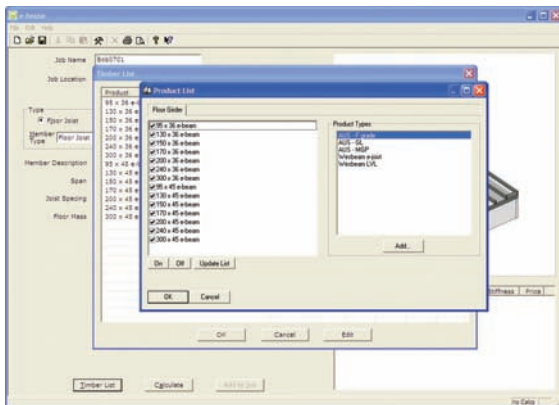
Step 3

9. Enter Job Name.
10. Enter Job Location.
11. Type – select the area of design for either joist, bearer, wall or roof.
12. Member type – select the relevant member type.
13. Member description – Enter description of member.
14. Input relevant measurements, i.e. span, joist spacing, rafter spacing, etc. Note that the diagram on the right hand side highlights the information required for each input.
15. Select timber lists.



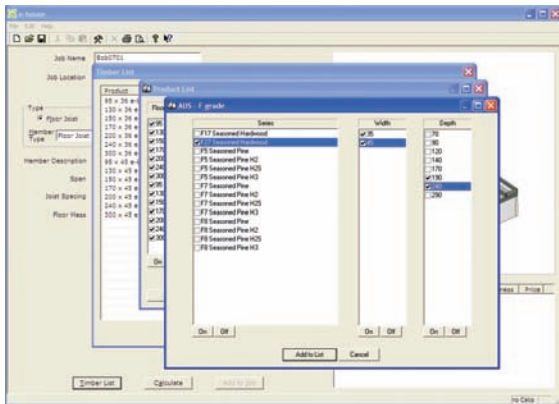
Step 4

16. The timber lists allows the input of pricing and the selection of use for specific member. Use all turns member on for all uses.
17. Click on edit to edit the member available in the timber list.



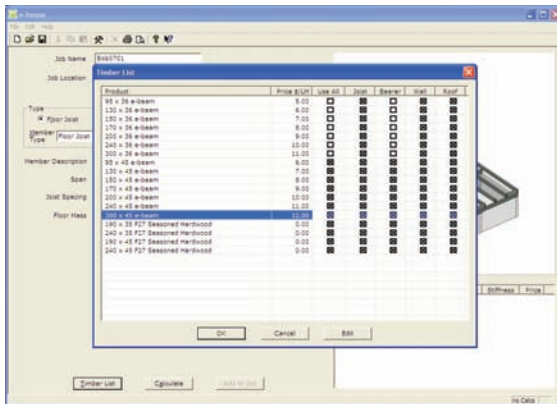
Step 5

18. Choose the material in the Product types that you would like to add to your timber list. The list includes Wesbeam LVL, Wesbeam e-joist, Seasoned F-grade (pine and hardwood), MGP graded pine and Glue Laminated timber.
19. Click Add.



Step 6

20. Select a series or use the on/off tick box for series width and depth.
21. When you have selected the Series, Width and Depth select 'add to list'.



Step 7

22. Select OK to exit product list.
23. Timber List – you will notice that the selected material has been updated on the timber list. You have the opportunity to input material costs at this stage. This can be useful to sort your designed material by Price, Stiffness, Strength and Solution. The price is also used to calculate the indicative price if you have the “add indicative pricing to output sheet” option turned on in presets.

To enter material costs select the product and double click. Enter the price and then press OK.

24. Press OK to continue.

Job Name: 800701

Job Location: 123 N Street
Dumfrieshire

Type: Floor Joist Floor Beams Joist Joist

Member Type: Floor Joist Supporting Floor Loads Only (single span)

Member Description: 22 over long

Span: 3020 mm

Joist Spacing: 450 mm

Floor Mass: 40 (22mm timber flooring plus carpet, underlay and ceiling) kg/m²

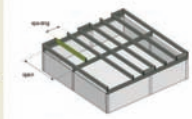


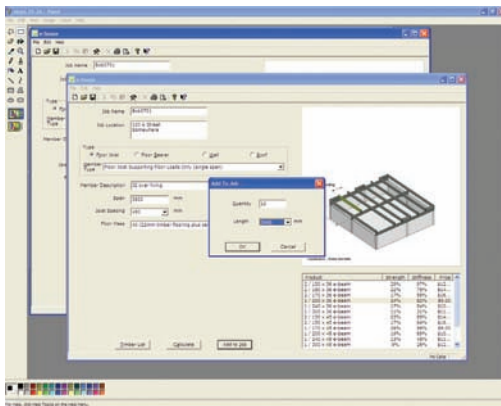
Table:

Product	Weight	Stiffness	Price
2 / 130 x 30 e-beam	20%	97%	812...
2 / 130 x 30 e-beam	22%	79%	814...
2 / 170 x 30 e-beam	27%	93%	814...
1 / 270 x 30 e-beam	24%	52%	89.00
1 / 240 x 30 e-beam	17%	34%	812...
1 / 300 x 30 e-beam	11%	31%	811...
2 / 130 x 40 e-beam	23%	89%	814...
2 / 150 x 40 e-beam	17%	64%	816...
1 / 170 x 40 e-beam	24%	94%	89.00
1 / 200 x 40 e-beam	19%	69%	812...
1 / 240 x 40 e-beam	13%	48%	811...
1 / 300 x 40 e-beam	9%	25%	812...


Buttons: Timber List, Calculate, Add to job


Step 8

25. Click Calculate and the program will calculate all of the selected material.
26. e-house gives you the option to sort the design material by Solution, Strength, Stiffness and Price. Click on the relevant heading in the Design Results Table for this option.



Step 9

27. The design is complete. If you are satisfied with your material selection, performance and cost, 'Add to Job'.
28. If you are using the 'Add approximate pricing to output sheet' option a dialogue box will allow the input of the quantity and minor adjustment to the length to allow for any additional material for blocking.
29. You can now design another member and add additional members to the job until the project is complete.
(Members can be removed from the job by clicking on edit>delete calcs and selecting the member to be removed from the output sheet)
30. To view your designed members click preview ().


Bill's Building Supplies
 100 Some Street
 Brisbane
 www.billsbuildingsupplies.com
 T 12 3456 7890
 F 12 3456 7890

Designer Name: Bill Wilson
Designer email: Bill.Wilson@billsbuildingsupplies.com
Job Name: 8080781
Job Location: 100 A Street
 Some-where

Member 1: 1 / 200 x 36 e-beam **10 of at 3900** **\$351.00**


Description: J2 over living
 Member Type: Floor Joist Supporting Floor Loads Only (single span)

Span: 3900 mm
 Joist Spacing: 450 mm
 Floor Mass: 40 kg/m²
 (22mm timber flooring plus carpet, underlay and ceiling)

Wind Class: C3
 Strength: 24% Stiffness: 83%

Minimum 25mm bearing required at bearing #1
 Minimum 25mm bearing required at bearing #2

Permanent load deflection=6.2 mm
 Temporary load deflection=1.6 mm




Member 2: 1 / 300 x 45 e-beam **1 of at 3300** **\$39.60**

Description: B1 over living
 Member Type: Floor Bearer Supporting Floor Joist Only (single span)

Span: 3900 mm
 Floor Load (incl): 3600 mm
 Floor Mass: 40 kg/m²
 (22mm timber flooring plus carpet, underlay and ceiling)

Wind Class: C3
 Strength: 48% Stiffness: 93%



Step 10

31. The output design sheet includes the company logo input in the presets in the top left corner, alongside the company information.
32. The output design sheet includes the graphic illustration of the member, along with the quantity allowed for and length, and the Total Indicative Price (if this option is turned on).
33. Print if required or you can keep the information on your computer as an electronic file.

190 Pederick Road
Neerabup WA 6031
Australia

PO Box 217
Wanneroo WA 6946
Australia

T (08) 9306 0400
F (08) 9306 0444

wesbeam@wesbeam.com
www.wesbeam.com



© Wesbeam Pty Limited ABN 89 004 268 017
Date of publication September 2008