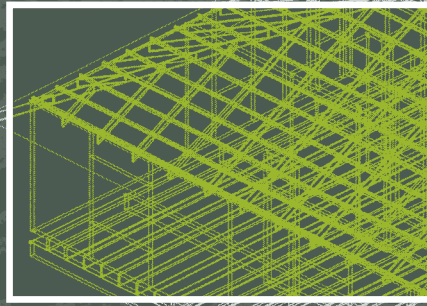




USER GUIDE



WELCOME

Welcome to e-house [beam], the software that will enable you to determine the most appropriate Wesbeam LVL product to use within a framing environment for a given span and load.

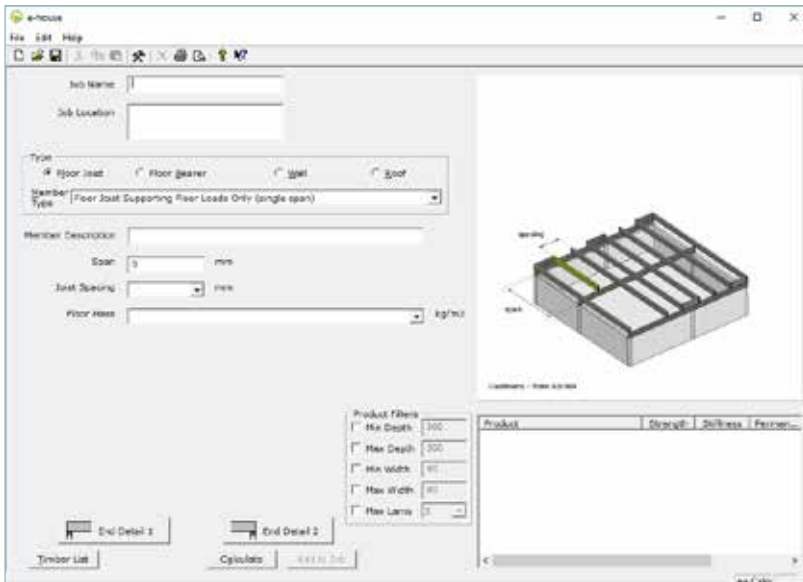
Please use this user guide to provide you with easy step by step instructions on how to use e-house [beam].

If you have any problems with the software please email e-house@wesbeam.com, and one of our technical support personnel will be able to assist.

STEP 01

STARTING PROGRAM

- 01 Open Program.
- 02 Select Presets (🔧) or Select Edit > Presets.



STEP 02

CHANGING DEFAULT SETTINGS

- 03 Enter the details of the Company and Designer using the software.
- 04 Upload company logo if required, to appear on the calculation output sheets.
- 05 Wind Classification – select the default nominated wind classification (in accordance with AS4055) for the region/area that the members are being designed for.
- 06 Adjust page margins if required (for Summary Sheet output).
- 07 Modify order of calculation outputs, number of product options to display and design criteria (columns) to display on the output sheet.
- 08 Choose whether to display approximate pricing on the output sheet.
- 09 Select Timber List button.

The screenshot shows a software settings dialog box with the following fields and options:

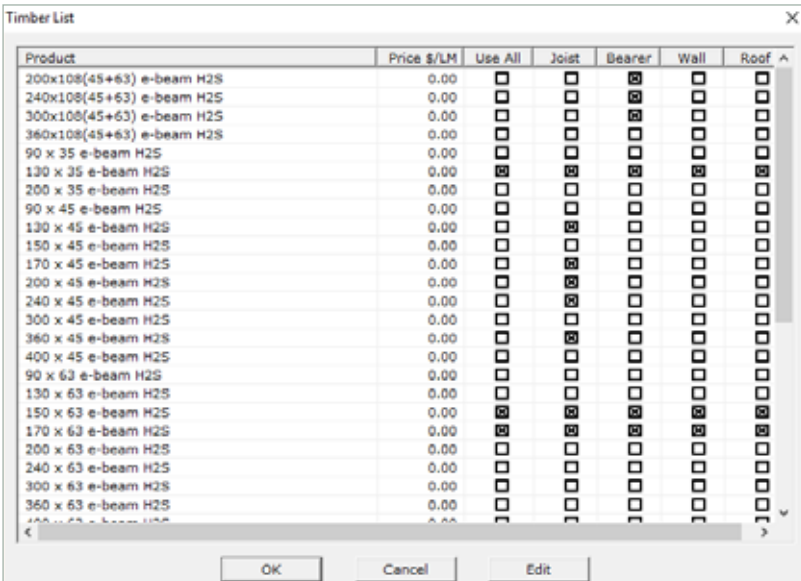
- Company Name:** Wesbeam
- Company Address:** 190 Pederrick Road, Neerabup
- Company Website:** wesbeam.com
- Phone:** 1800 362 148
- Fax:** Company fax
- Designer Name:** John Smith
- Designer email:** design@wesbeam.com
- Current Logo:** (click on logo to customize) [Logo icon]
- Margins (mm):** Top: 6, Left: 6, Right: 6, Bottom: 6
- Default Sort Order:** Product
- Number of options to display:** 2
- Columns to display:**
 - Strength
 - Stiffness
 - Permanent Deflection
 - Live Deflection
 - Dynamic Check
 - Price
- Add approximate pricing to Output Sheet
- Wind Classification:** N3
- Buttons:** OK, Cancel, Timber List

HINT This customises your settings for default jobs and you will only need to input this once. Choose the setting that will most likely apply to the designs you will carry out.

STEP 03

CHOOSE TIMBER LIST

- 10 Select materials to use for joists, bearers, wall and roof members.
- 11 Enter pricing (optional) if you've selected to do so in the Presets.
- 12 Select "Edit" to add or remove products from your timber list.

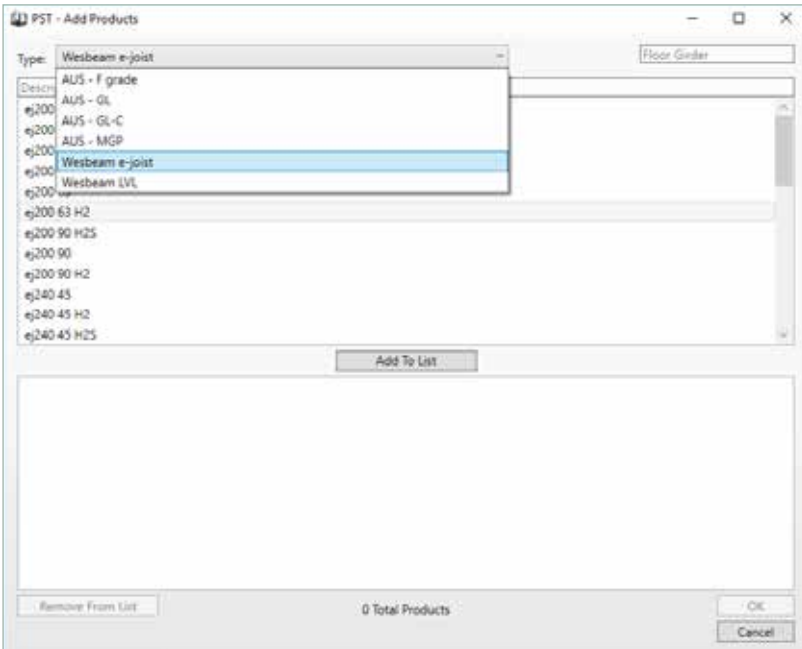


HINT Although Wesbeam is an LVL manufacturer, the Wesbeam e-house [beam] software also allows the user to design in other timber types, including softwood, hardwood and glue-laminated beams!

STEP 04

ADD OR REMOVE MATERIALS FROM TIMBER LIST

- 13 Select materials and press delete to remove from the current list.
- 14 Select “Add Products” to add more products to the Timber List.
- 15 Select which material type you would like to add to the Timber List.
- 16 Once you've selected the type, choose the size (width and depth) and select “Add to List”. Multiple materials can be added to the list at one time.

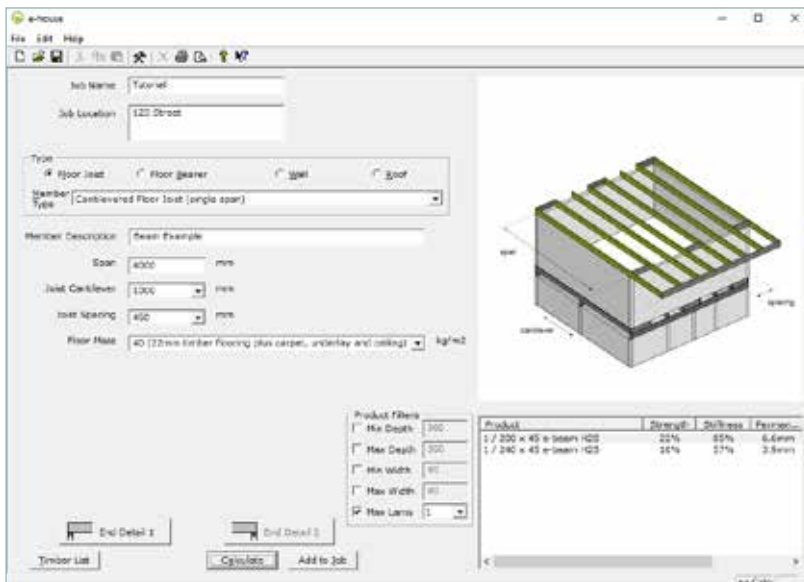


HINT This is your default timber list that can be changed for each job via the 'Timber List' button on the home screen.

STEP 05

DESIGN MEMBERS


- 17 Enter Job Name and Location
- 18 Type – select the relevant member type for the design
- 19 Member Description – Enter the description of the member (e.g. beam 2) for reference in the design output.
- 20 Input relevant measurements (i.e. span, joist spacing, load areas etc.)
- 21 Select the appropriate end details where applicable (i.e. notched, splayed etc.)
- 22 Modify design filters to suit the requirements (i.e. maximum height, number of laminates etc.)
- 23 Press “Calculate” and e-house [beam] will calculate suitable member sizes.

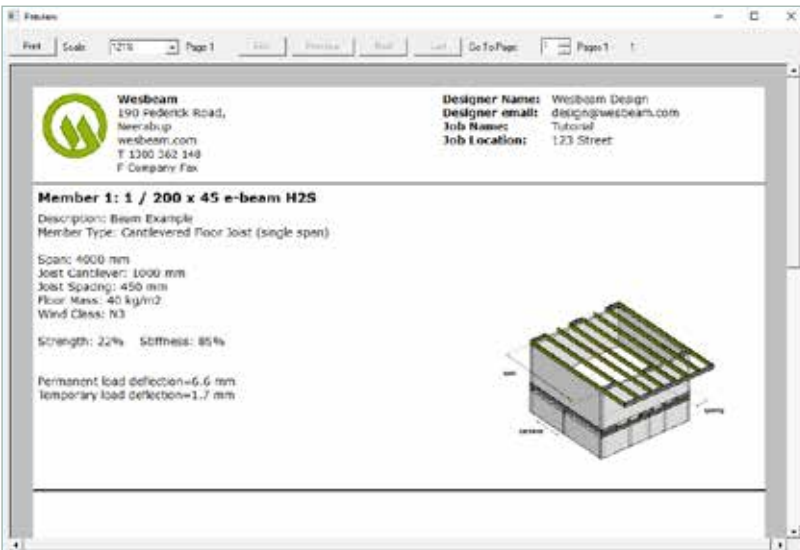


HINT The images on the right-hand side of the window show the user what member they are designing, as well as illustrating the required inputs, such as span, spacing and cantilever.

STEP 06

ADD MEMBERS TO JOB

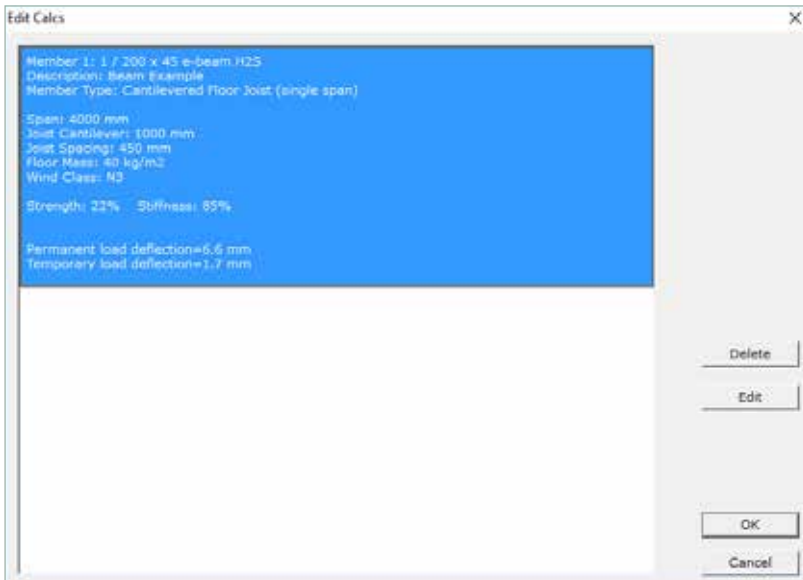
- 24 The design is complete. If you are satisfied with your material selection, performance and cost, select the member and click "Add to Job". You can now design another member using the e-house [beam] software to add to the same job.
- 25 To view your designed members, click Preview ( Preview). From here you can save/print as a PDF document or to a local printer.



STEP 07

EDITING JOBS

- 26 To edit an existing job (e.g. to change member size or to adjust spans) select Edit > Edit Calcs.
- 27 Select the beam you wish to change and select “Edit” to continue working on or to change the design.



HINT Ensure that you save the e-house design file to your computer or cloud storage for future reference or editing. That way, if the design or material changes you don't have to start over!

THANK YOU

Thank you for using e-house [beam] software from Wesbeam, for further information contact e-house@wesbeam.com and for online tutorials visit wesbeam.com/design-centre/e-house-tutorials



© Wesbeam Pty Limited
ABN 89 004 268 017
WESB0232 January 2019